

CENTRAL KUTCHAN STAFF HOUSE

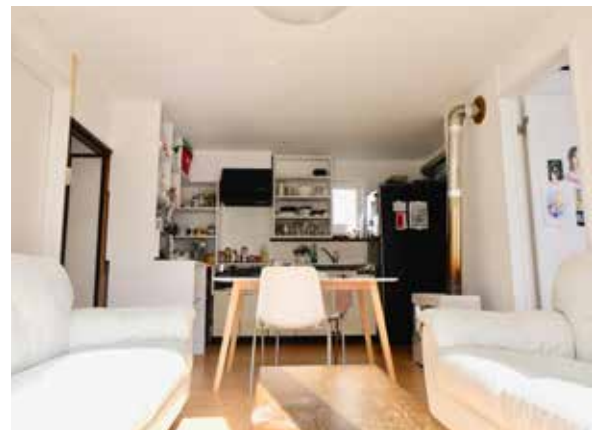
HOUSES IN KUTCHAN






RARE CORNER BLOCK IN DOWNTOWN KUTCHAN WITH A MULTITUDE OF OPTIONS!



¥24,000,000

- ▶ Location location location! Central downtown Kutchan, situated on the more convenient eastern side of main thoroughfare Route 5.
- ▶ Excellent entry-level investment for the savvy buyer looking to get into the Niseko property market.
- ▶ Existing building was renovated in 2013, and in its current condition is well suited to be utilised as staff accommodation for a local business operator, or leased on a fixed-term or seasonal basis.
- ▶ Flat corner block facilitates optimal longer term redevelopment.
- ▶ Easy access to an array of shopping & dining options, all public amenities, with the Hanazono and Hirafu ski resort areas only a 10-15 minute Qdrive away.
- ▶ With the arrival of the Shinkansen bullet train and expressway interchange coming within the decade, and major redevelopment in the pipeline for Kutchan's downtown commercial zone, Kutchan's star shines bright, and property prices are set for continued strong appreciation.



 Minami 6 Nishi 2, Kutchan, Hokkaido

 Building: 84.79 m² (25.64 tsubo)
 Land: 357.38 m² (108.10 tsubo)

 4  1

Get in touch

 info@nisekorealestate.com

 +81 (0) 136 21 7722

 nisekorealestate.com