

HAVEN NISEKO 201

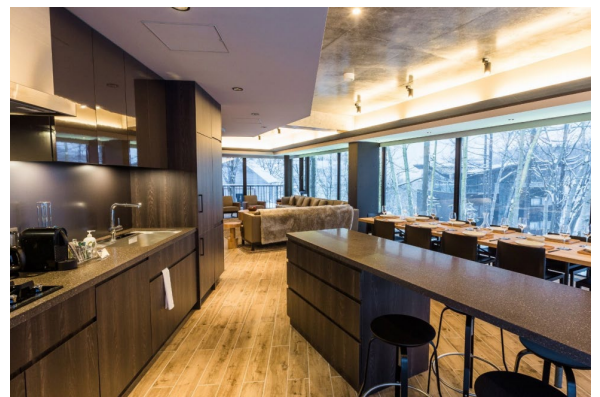
APARTMENT IN MIDDLE HIRAFU




UNIQUELY SITUATED ON A CREEK-EDGE PROMONTORY

- ▶ 3 key system designed to ensure the greatest potential flexibility and return on investment for a shrewd buyer.
- ▶ Floor to ceiling glass offering expansive views of Mt Yotei, ski slopes and surrounding village.
- ▶ Wonderfully appointed open-plan living and dining area.
- ▶ 3 separate balconies.
- ▶ Efficient & comfortable underfloor heating system.
- ▶ Secure in-unit Owner storage.

¥280,000,000
per sqm: ¥1,253,132




 Aza Yamada 163-155, Middle Hirafu

 Building: 223.44m²

 4

 4

 8 minutes walk / 2 minutes drive

Get in touch

 info@nisekorealestate.com

 +81 (0) 136 21 7722

 nisekorealestate.com