

NEW 3BR HOME IN COUNTRY RESORT

HOUSE IN KABAYAMA

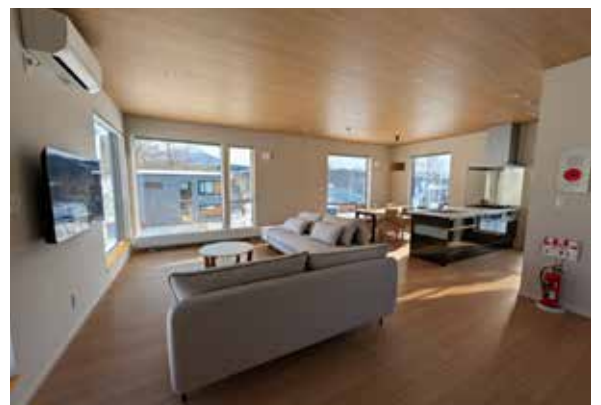


NEWLY BUILT FAMILY RESIDENCE FEATURING AN INVERTED FLOOR PLAN TO MAXIMIZE MAJESTIC MT. YOTEI VISTAS AND GRAND HIRAFU

¥96,000,000

Situated in the quiet Country Resort neighborhood, this newly constructed residence offers a Western-style living experience. Newly completed, the home features a thoughtful inverted layout designed to capture the best of Niseko's scenery while providing practical functionality for family living or rental use.

- ▶ The entire 3rd floor is dedicated to an open-plan living, dining, and kitchen area. With windows on all sides, the space is bathed in natural light and frames stunning views of Mt. Yotei to the east and the glowing night lights of Grand Hirafu Resort.
- ▶ Guest & family quarters: The 2nd floor hosts three bedrooms, including one fitted with bunk beds, making it ideal for families. This level also features a separate toilet and a full bathroom with a "view bath" for relaxing after a day on the slopes
- ▶ The 1st floor is designed for Niseko's active lifestyle and featuring a spacious genkan entryway, a large garage with plenty of storage space, and a dedicated laundry room with ample space to hang-dry ski wear.
- ▶ The home is positioned on a 364 sqm block, providing a versatile canvas for your lifestyle needs. There is ample space for a vegetable garden, an expansive outdoor deck, or a campfire pit area.



 Kabayama 30-113, Kutchan, Hokkaido
 Building Size: 134.97 m² (40.82 tsubo)
Land Size: 364 m² (110.11 tsubo)
 3  2+  5 mins drive

Get in touch

 info@nisekorealestate.com

 +81 (0) 136 21 7722

 nisekorealestate.com