

POWDER TRACKS 7

APARTMENT IN UPPER HIRAFU

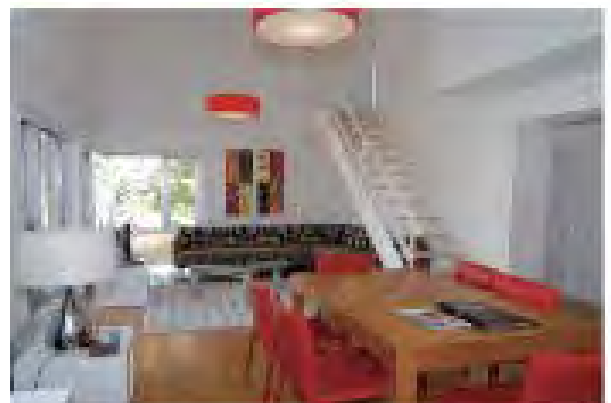


SENSATIONAL UPPER HIRAFU CONDO


¥80,000,000

Per sqm: ¥1,052,631

- ▶ Dual level apartment consists of 3 bedrooms & 2 bathrooms, spacious living & dining area, modern furnishings & fixtures, and outdoor terrace.
- ▶ Perfectly located in the heart of Upper Hirafu, with easy walking proximity to Hirafu ski lifts, and many top local eateries.
- ▶ Immediate access to main street Hirafu-Zaka, provides excellent capital appreciation potential.
- ▶ Apartment holds dual Ski Resort and Mt. Yotei views.
- ▶ Comprehensive management package in place by Niseko Central, Powder Tracks is popular accommodation option for resort guests.
- ▶ Powder Tracks amenities include secure Owner storage, communal ski drying room, and laundry facilities.




 191-55 Yamada, Kutchan-cho, Abuta-gun, Hokkaido 044-0081

 Building: 76 m²

 3

 2

 6mins walk

Get in touch

 info@nisekorealestate.com

 +81 (0) 136 21 7722

 nisekorealestate.com