

# SNOW MONKEY 2

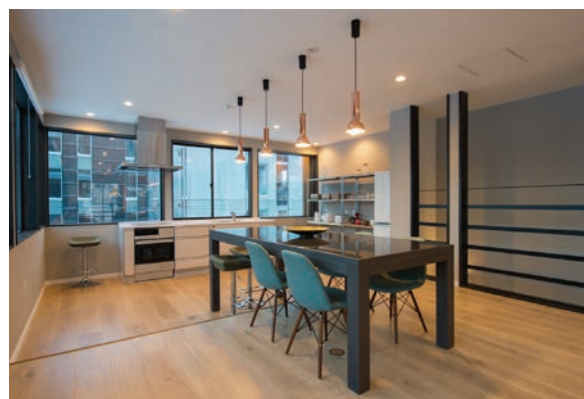
HOUSE IN LOWER HIRAFU




## CONTEMPORARY HOME CENTRALLY SITUATED WITHIN LOWER HIRAFU'S HUMMING RESORT NEIGHBOURHOOD.

¥135,000,000

- ▶ Efficient 3 bedroom, 2 bathroom configuration, with spacious open-plan living with a fireplace, dining and kitchen space - perfect for entertaining.
- ▶ Modern custom fitout & finish to suit all lifestyle needs.
- ▶ Situated on a corner block ensures an 'open air' feeling to the property's 2nd floor living space.
- ▶ Separate ski drying room.
- ▶ Being situated along the Free Shuttle Bus route provides excellent convenience.
- ▶ Efficient management package in place, Snow Monkey is perfectly suited to the busy visitor rental market.




 Yamada 163-215, 216 , Kutchan-cho, Abuta-gun, Hokkaido

 Building: 133.08 m<sup>2</sup> Land: 182 m<sup>2</sup> (55.05 tsubo)

 3

 2

 5 minutes drive



Get in touch

 [info@nisekorealestate.com](mailto:info@nisekorealestate.com)

 +81 (0) 136 21 7722

 [nisekorealestate.com](http://nisekorealestate.com)