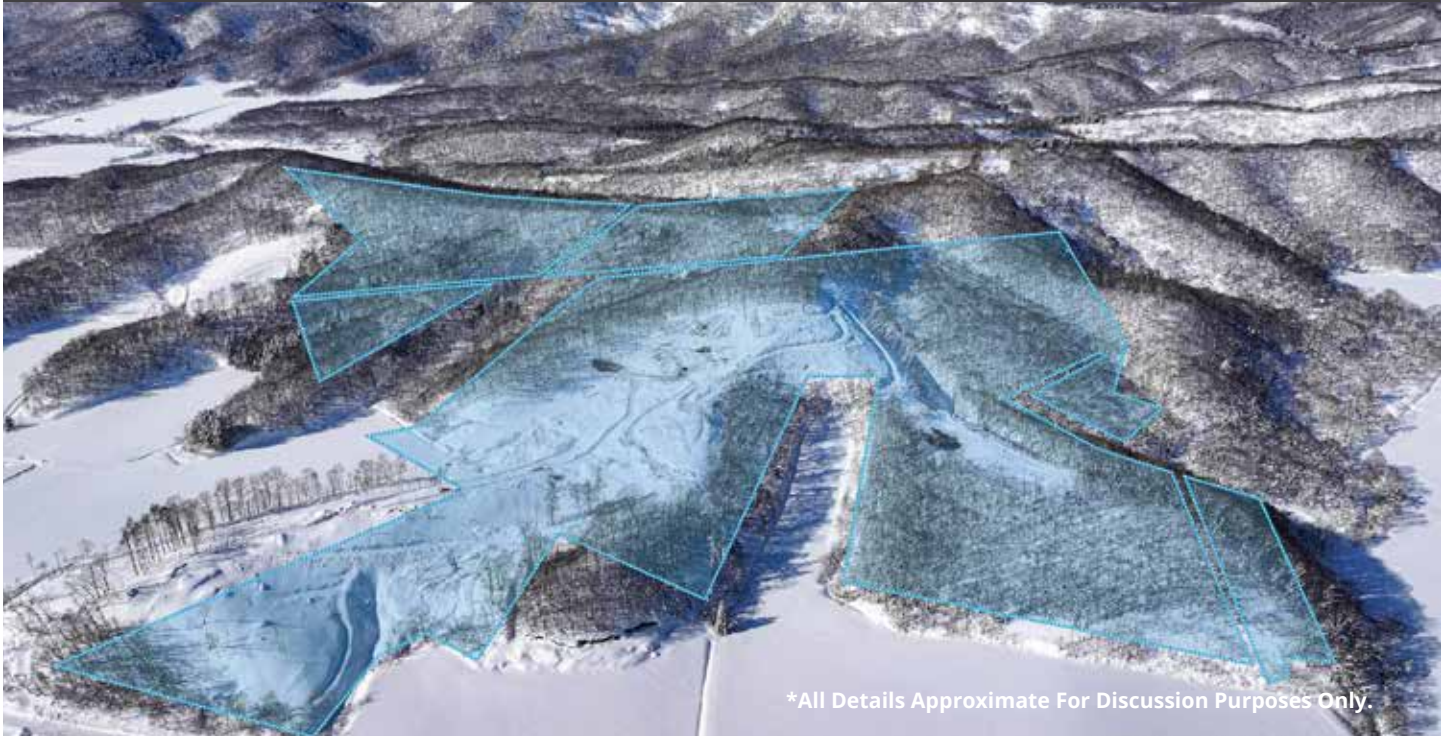


# SUEHIRO 29 HECTARE DEVELOPMENT SITE

LAND IN KUTCHAN



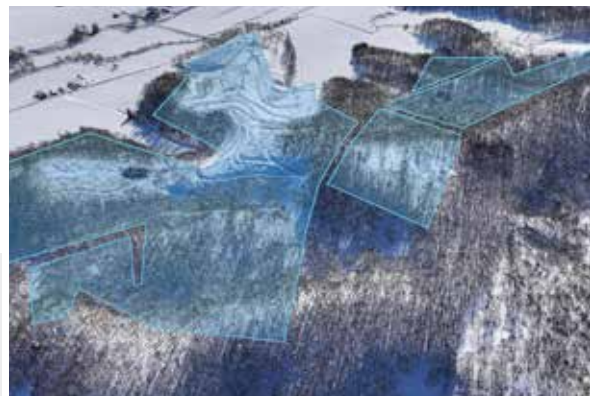
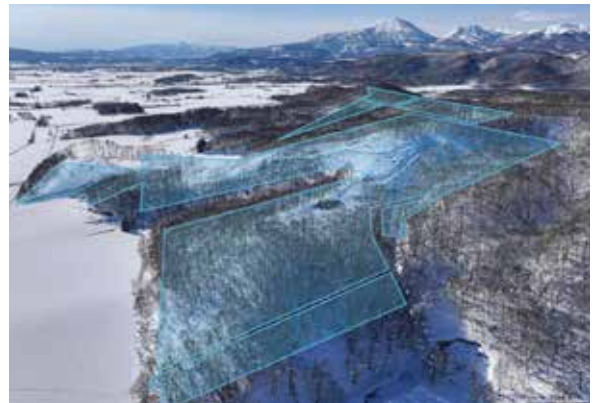
\*All Details Approximate For Discussion Purposes Only.

## A MONUMENTAL 89,000-TSUBO (29 HECTARE) LAND HOLDING DEFINED BY ITS SWEEPING PANORAMAS, CAPTURING MT. YOTEI, THE ENTIRE NISEKO RANGE

# ¥2,949,800,000

Per Tsubo: ¥33,057

- ▶ Spanning an impressive 294,979 sqm (89,231 tsubo), this property represents one of the most significant consolidated land holdings currently available in the Niseko region.
- ▶ **360 Views:** The Suehiro 29 Hectare Development Site's upper elevations unlock a commanding visual experience that is rare even in this region. The topography creates a natural platform with 360-degree vistas include: Mt. Yotei, the Niseko Range, Niseko United, Shiribetsu River Valley.
- ▶ **Development Potential:** This elevated positioning is ideally suited for a landmark project that capitalizes on the scenery. The scale and vistas support an iconic hotel, a destination restaurant, or a flagship private estate where the architecture can frame a different mountain peak from every window.
- ▶ **Site Access & Practicality:** While the site offers seclusion, it retains road frontage as well as practical features for development planning. Existing forestry roads run through the property, offering vehicular access routes to the interior. Although these tracks may require some clearing or maintenance to be fully serviceable, their presence significantly simplifies the initial stages of surveying, planning, and site inspections.
- ▶ 16 min to Kutchan Station, 25-28 min to Niseko Hanazono, Grand Hirafu Resort.



📍 Suehiro 4, Takami 408, Kutchan, Abuta-gun, Hokkaido  
📏 Land: 294,979.68 m<sup>2</sup> (89,231.35 tsubo)  
🚗 15 mins drive

Get in touch

✉ [info@nisekorealestate.com](mailto:info@nisekorealestate.com)

☎ +81 (0) 136 21 7722

🏠 [nisekorealestate.com](http://nisekorealestate.com)